

# Remote Deposit Online

## Technical Requirements



Remote Deposit Online functions best if your system meets the recommended configuration. Prior to use, review the following technical requirements for critical hardware and software requirements.

### Important Reminders:

- Broadband Internet connectivity with TCP/IP must be enabled with a minimum upload speed of 100Kbits/sec
  - To measure bandwidth, go to <https://www.speakeasy.net/speedtest/> and select Begin Test. Make note of the Upload Speed results.
- Scanner models may have different system requirements.
- Only the operating systems, browsers, and scanners listed herein are compatible at this time.

### Windows Requirements:

Equipment/Software	Requirement
Operating System (May vary by scanner)	Windows 10 (any 32- or 64-bit editions) Windows 11 (64-bit editions)
Internet Browser	Microsoft Edge version up to 132 Google Chrome version up to 132 Mozilla® Firefox version up to 134 <b>Note:</b> Bank of America recommends turning off automatic updates for your browsers.

Scanner	Minimum System Specifications	Recommended System Specifications
Digital Check CheXpress 30 (CX30) Panini Vision X 1B	2 GB RAM 2 GHz Pentium IV 1.5 GB hard drive free space	2 GB RAM 2.4 GHz Pentium IV 1.5 GB hard drive free space

# Remote Deposit Online

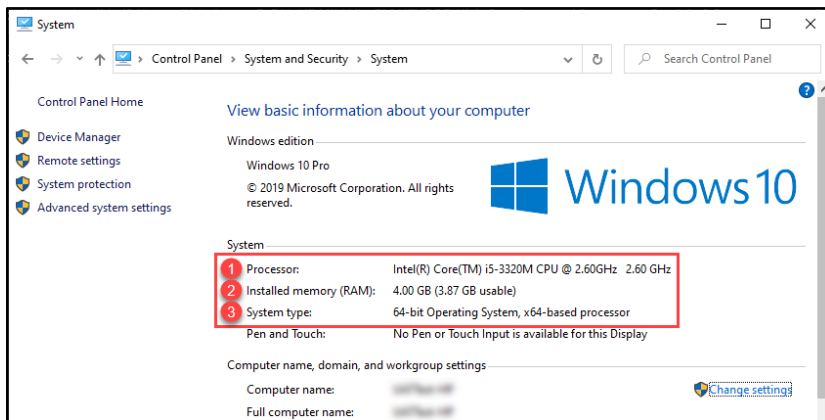
## Technical Requirements

### How to Check System Requirements on a Windows 10 Machine:

#### System/Memory/Processor:

Start (Microsoft Orb) → Control Panel → System

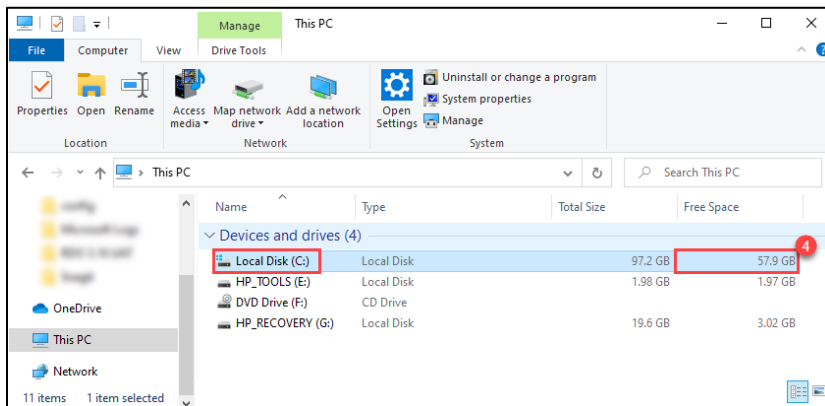
1. Processor = 2 GHz Pentium IV
2. Memory (RAM) = 2G Minimum / 2G Recommended
3. System = OS Version Min Microsoft Windows 8 required



#### Hard Drive:

Start (Microsoft Orb) → Computer

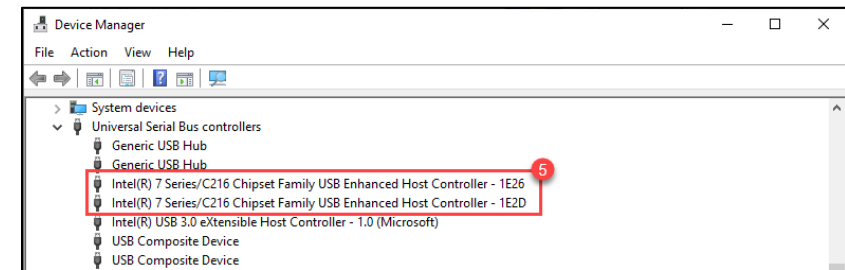
4. Hard Drive = 1.5 GB free space is required



#### USB 2.0:

Start (Microsoft Orb) → Control Panel → System and Maintenance → Device Manager → Universal Serial Bus controllers → USB2 or Enhanced Host

5. USB Controllers = USB2 or Enhanced Host Controller



# Remote Deposit Online

## Technical Requirements

### MAC Requirements:

Equipment/Software	Requirement
Operating System (May vary by scanner)	macOS 10.16/11 Big Sur macOS 12 Monterey macOS 13 Ventura macOS 14 Sonoma
Internet Browser	Safari version 14 to 17.6    Google Chrome version up to 132 Mozilla® Firefox version up to 134 Note: Bank of America recommends turning off automatic updates for your browsers.

Scanner	Minimum System Specifications	Recommended System Specifications
Digital Check CheXpress 30 (CX30) Panini Vision X 1B	2 GB RAM Full 64-bit processor 1.5 GB hard drive free space	2 GB RAM Full 64-bit processor 1.5 GB hard drive free space

# Remote Deposit Online

## Technical Requirements

### How to Check System Requirements on a MAC 14 Machine:

#### System/Memory/Processor:

Apple Icon → About This Mac

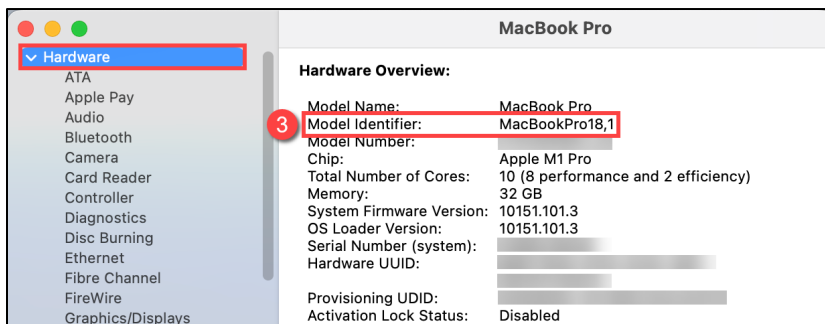
1. Version / System = OS Version Min 10.9 is required
2. Memory (RAM) = 2G Minimum / 2G Recommended



#### Hard Drive:

Apple Icon → About This Mac → More Info → General → System Report → Hardware

3. Model Identifier = iMac7,1 or newer, or MacBook5,1 or newer (All are full 64 bit)



#### Processor:

Apple Icon → About This Mac → More Info → General → Storage

4. Hard Drive = 1.5 GB free space is required



#### USB 2.0:

Apple Icon → About This Mac → More Info → General → System Report → Hardware → USB

5. USB Controllers = USB 2.0 or Higher

